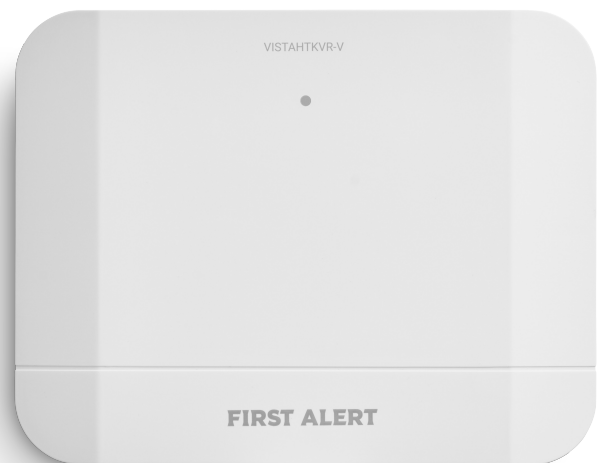


## VISTA® Hybrid Series VPLEX Module

### VISTAHTKVR-V

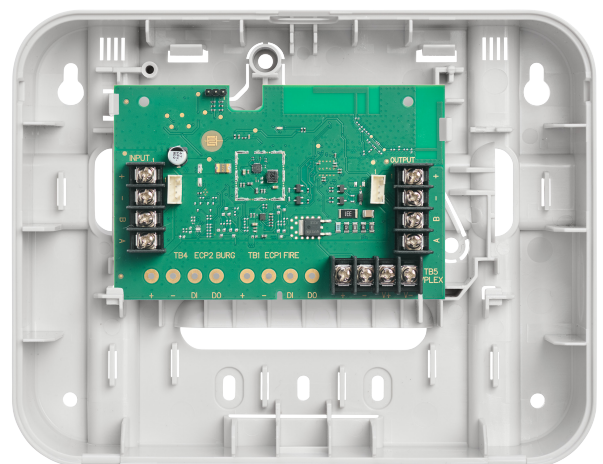
The VISTAHTKVR-V module allows for the addition of VLEX devices onto a mid-level VISTA Series system reducing the need to pay more for a larger commercial system. VPLEX sensors can be installed using two wires for power and data instead of the traditional four, reducing wiring costs. These devices draw minimal amounts of current minimizing the need for additional auxiliary power supplies.

VPLEX devices continuously monitor and store functions in the keypad event log that are reported to a central station drastically reducing system maintenance costs when annual tests and inspections are needed.



### Specifications

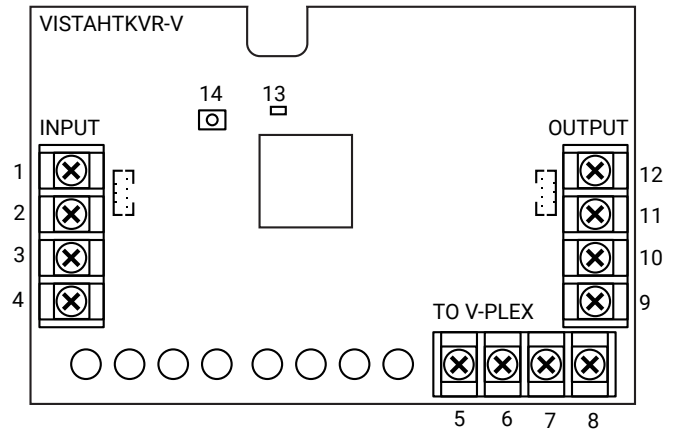
- 4 modules supported, one for each partition
- 96 total devices, 172 input zones and 52 relay modules (4101SN's) are supported
- 2 built in tampers for for the removal of the cover or from the wall
- Communication is supervised so if wiring is cut a supervision alarm signal will be sent
- Can only be mounted remotely in the included plastic to gang box or wall directly
- Physical: 6.93"W (176mm) X 5.43" H (138mm) X 1.99 D (50.5mm)
- Electrical Input Voltage: 12VDC nominal (10-14VDC)
- Electrical Input Current: 56mA. Note this does not include powered devices using the AUX terminals.
- Electrical Output Voltage: 12VDC nominal (10-14VDC)
- Electrical Output Current: Reference the control panel or power supply, AUX outputs Ratings – 1.3Max
- Operating Temperature: 32 to 122 F (0 – 50 C)
- Operating Humidity: 0 – 95% Relative Humidity
- Power supply regulation on board – powered off the VISTA H3 controls power and battery backed up if panel losses AC.



# V-Plex Sensor Compatibility

Sensor	Description	Sensor	Description
269SN	Hold up Switch	4939SN	Surface Mount Contact
4101SN	1 Zone + 1 Relay	4959SN	OHD Contact
4190SN	2-zone Expander	5193SD	Smoke Detector
4191SN	Recessed Contact	5193SDT	Smoke Detector
4193SN	1 zone Expander	DT8050A-SN	Dual Tec PIR, wiAnti-Mask
4193SNP	1 zone Expander	DT7500SN	Dual-Tec PIR
4208SN	8 Zone Expander	FG1625SN	Glass Break Detector
4208SNF	8 Zn Exp. w/Class A	IS2500SN	V-Plex Sim Dual Tech
4208U'	8 Zone Expander	IS3050A-SN	Motion Detector
4209U*	4. 2-Wire Smoke Zn	VPLEX-VSI	V-Plex Short Isolator

\* Must be set to serial mode



iBus Wiring Limitations					
Wire Gauge (AWG)	Total Current of All Devices Connected to a Single Wire Run				
	50mA or less	100mA	300mA	500mA	600mA
#22	700ft (213m)	350ft (107m)	120ft (37m)	70ft (21m)	60ft (19m)
#20	1200ft (366m)	600ft (183m)	200ft (61m)	120ft (37m)	100ft (30m)
#18	1900ft (579m)	950ft (290m)	320ft (98m)	190ft (58m)	160ft (49m)
#16	3000ft (914m)	1500ft (457m)	500ft (152m)	300ft (91m)	260ft (76m)

**Note:** The length of all wire runs for all partitions combined must not exceed 3000 feet (914m) when unshielded quad conductor cable is used or 1500 feet (457m) if shielded cable is used.

## Ordering Information

Part #
VISTAHTKVR-V

**resideo**

**Resideo Technologies, Inc.**  
 2 Corporate Center Dr. Suite 100  
 P.O. Box 9040 Melville, NY 11747  
 1-800-645-7492

**For more information**  
[resideo.com/pro](http://resideo.com/pro)

VISTAHTKVR-V\_DS | AR | 11/24  
 © 2024 Resideo Technologies, Inc.  
 All rights reserved